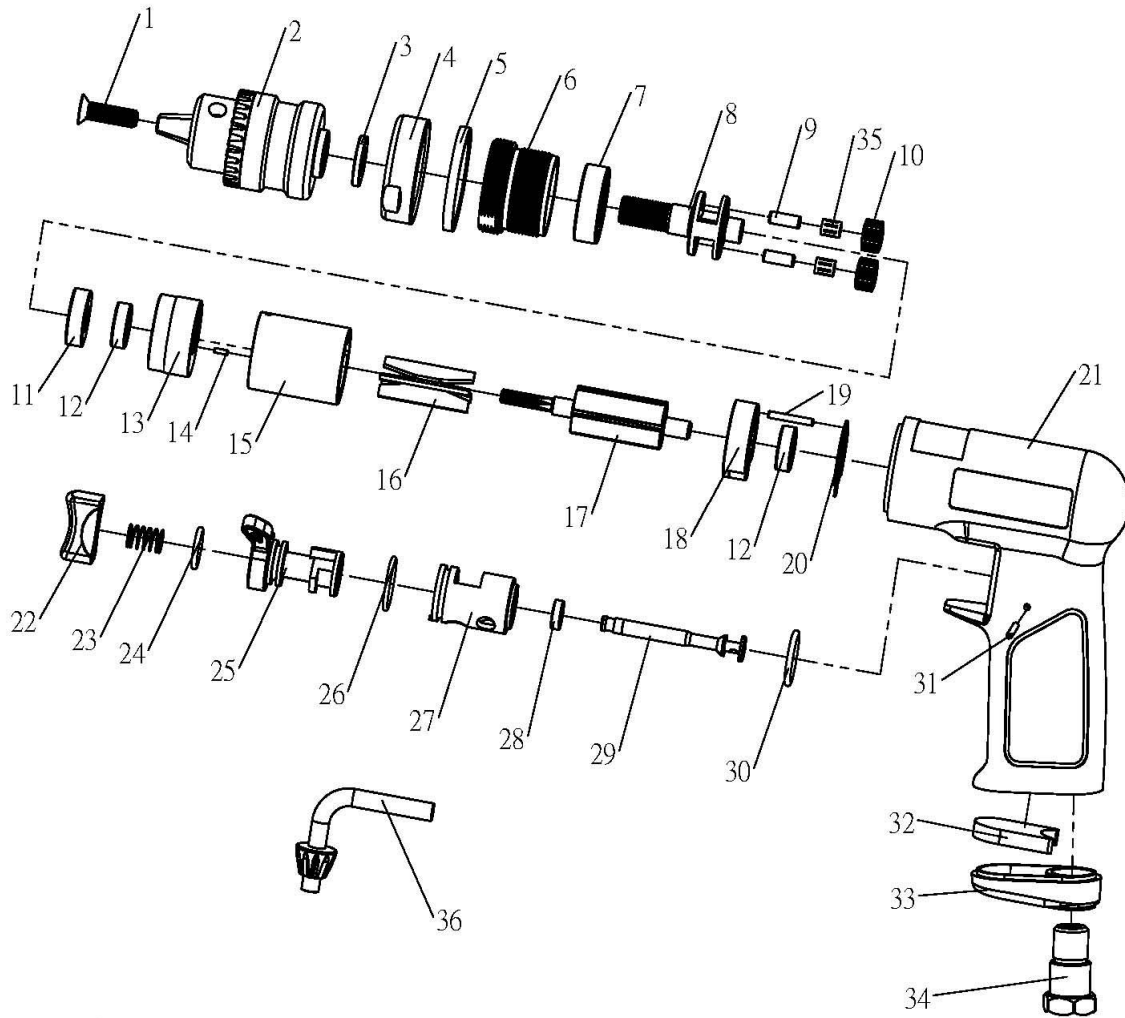


3/8" MINI AIR REVERSIBLE DRILL



Index No.	Parts No.	Description	Q'ty
1	H4-0520L	Screw (M5×20)	1
2	ARD38-002	Drill Chuck (3/8")	1
3	ARD12-003	Chuck Spacer	1
4	GMRD38-004	Front Housing	1
5	GMRD38-005A	Ring	1
6	GMRD38-006	Internal Gear	1
7	B-6000TT	Ball Bearing (6000ZZ)	1
8	GMRD38-008	Planet Carrier	1
9	NR-40108	Pin (φ 4×10.8)	2
10	GMRD38-010A	Planet Gear	2
11	B-698T	Bearing (698ZZ)	1
12	B-696T	Bearing (696ZZ)	2
13	GMRD38-013	Front Plate	1
14	SPP-15050	Spring Pin	1
15	GMRD38-015	Cylinder	1
16	523-012	Rotor Blade	5
17	GMRD38-017A	Rotor	1
18	GMRD38-018	Rear End Plate	1

Index No.	Parts No.	Description	Q'ty
19	SPP-20160	Spring Pin (φ 2×16)	1
20	GMRD38-020	Washer	1
21	GMRD38-021A	Housing	1
22	GMRD38-022	Trigger	1
23	ARD38-021	Spring	1
24	P-AS013	O-Ring (φ 10.82×1.78)	1
25	GMRD38-025	Reverse Valve	1
26	P-S016	O-Ring (φ 15.5×1.5)	1
27	GMRD38-027	Reverse Valve Bush	1
28	ARD38-027	Support Ring	1
29	GMRD38-029	Throttle Valve	1
30	P-15200	O-Ring (φ 15×2)	1
31	NR-20228	Pin (φ 2×22.8)	1
32	GMRD38-032A	Silencer	1
33	GMRD38-033	Exhaust Diffuser	1
34	GMRD38-034	Inlet Bushing	1
35	GMRD38-035	Needle Bearing	2
36	ARD38-036	Key	1