

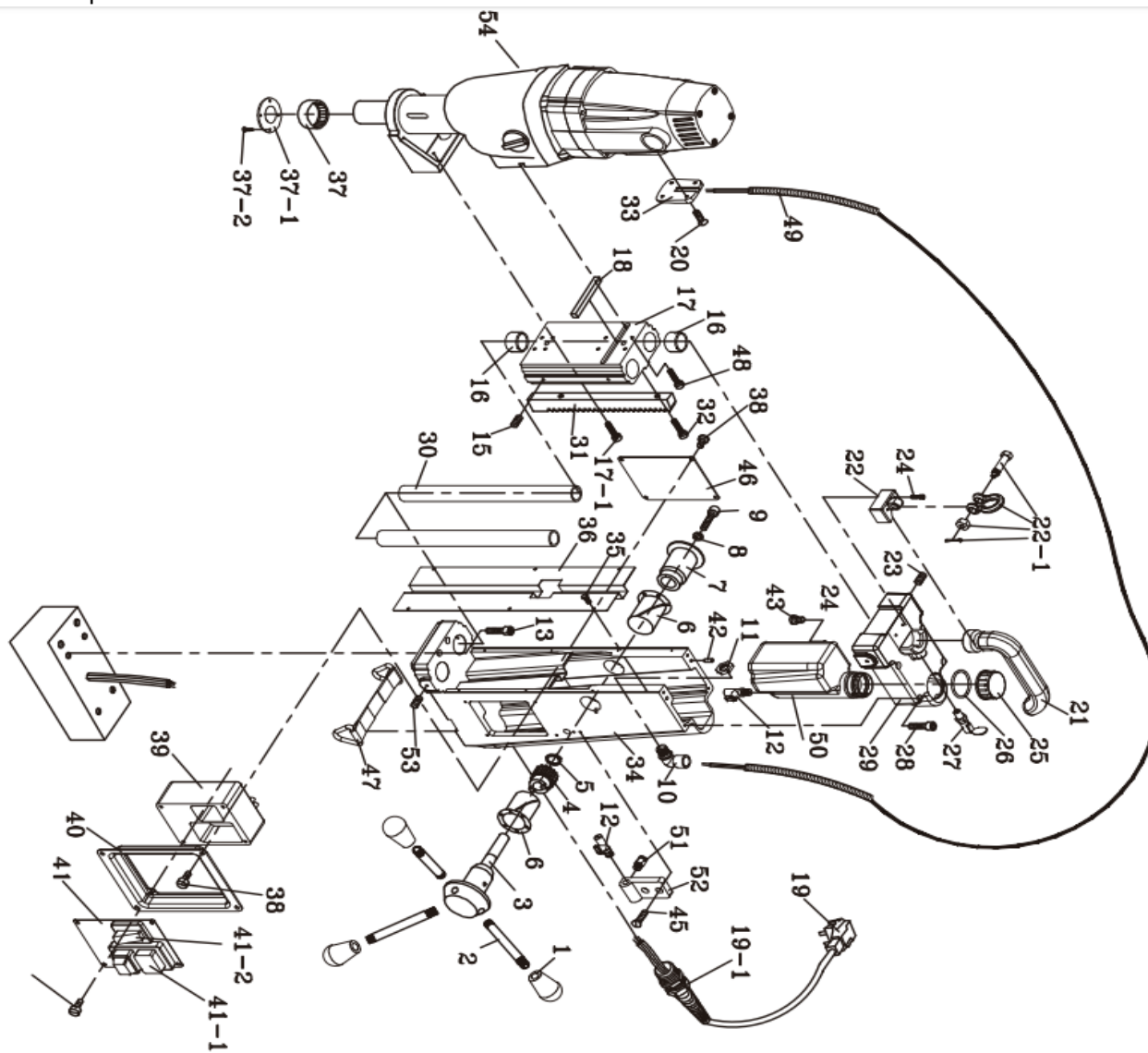
Схемы запасных  
частей

 **EUROBOOR**  
FOR PROFESSIONALS BY PROFESSIONALS

Магнитный сверлильный станок

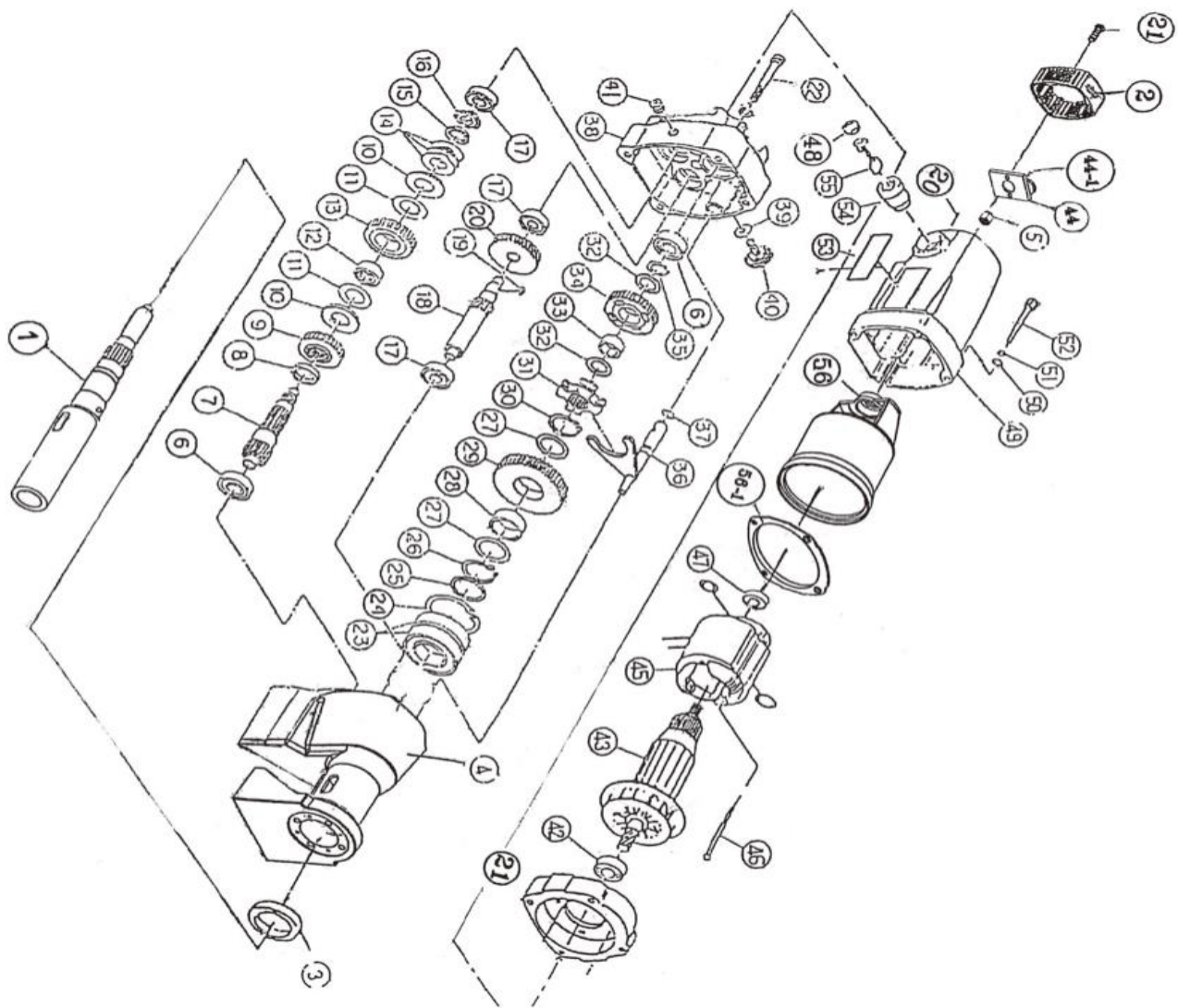
**ECO.200**





Взрыв-схема мотора станка

ECO.200



## Зап. части для станка

## ECO.200

ECO.200 - Complete Machine			ECO.200 - Complete Machine		
Part No	Component	Qty	No	Component	Qty
1	Capstan ball	3	34	Housing	1
2	Capstan arm	3	35	Tension pin	6
3	Capstan pinion shaft	1	36	Housing cover plate	1
4	Pinion	1	37	Arbor bearing	1
5	Snap ring	1	37-1	Arbor bearing washer	1
6	Pinion bearing	2	38	Pan head screw	12
7	Pinion shaft collar	1	39	Control panel assembly	1
8	Shakeproof washer	1	39-1	Red & green switch	1
9	Socket head cap screw	1	39-2	Power switch	1
10	Coolant elbow	1	40	Fascia plate frame	1
11	Hex nut	1	41	Fascia plate	1
12	Valve	2	42	Tension pin	2
13	Socket head cap screw	4	43	Pan head screw	2
14	Magnet base	1	44	Waterproof rubber	1
15	Socket set screw	4	45	Pan head screw	1
16	Bush	4	46	Logo plate	1
17	Slide	1	47	Safety strap	1
17-1	Socket head cap screw	4	48	Socket head cap screw	4
18	Key	1	49	Motor cable assembly	1
19	Mains cable assembly	1	50	Oil bottle assembly	1
19-1	Cable fixture	1	51	Valve	1
20	Countersunk screw	4	52	Valve fixture	1
21	Handle	1	53	Socket set screw	2
22	Handle fixture	1	54	Motor assembly	1
22-1	Lifting bolt	1			
23	Socket set screw	2			
24	Socket head cap screw	2			
25	Oil bottle cover	1			
26	O ring	1			
27	Fixing bolt	1			
28	Socket head cap screw	4			
29	Housing cover	1			
30	Steel tube	2			
31	Rack	1			
32	Socket head cap screw	2			
33	Cable cover	1			

Зап. части для мотора станка

ECO.200

ECO.200 - Motor & gearbox			ECO.200 - Motor & gearbox		
Part No	Component	Qty	No	Component	Qty
1	Arbor spindle	1	33	Metal	1
2	End cap	1	34	Final gear (H)	1
3	Copper spacer	1	35	Circlip	1
4	Gearbox assembly	1	36	Shift lever	1
5	Speed sensor	1	37	Seal	1
6	Ball bearing	2	38	Inner gearplate	1
7	Third pinion (H)	1	39	Rubber collar	1
8	Thrust washer	1	40	Gear selector	1
9	Spacer	1	41	Screw	1
10	Shakeproof washer	2	42	Ball bearing	2
11	Thrust washer	2	43	Rotor	1
12	Shakeproof washer	1	44	Speed controller assembly	1
13	Third gear	1	44-1	Screw	2
14	Disk spring	3	45	Stator	1
15	Metal collar	1	46	Screw	2
16	Lock nut	1	47	Ball bearing	1
17	Ball bearing	2	48	Carbon brush cover	2
18	Second pinion	1	49	Motor housing	1
19	Key	1	50	Metal collar	4
20	Second gear	1	51	Disk seal	4
21	Inner cap	1	52	Socket head cap screw	4
22	Screw	4	53	Logo plate	1
23	Ball bearing	2	54	Brush holder	2
24	Circlip	1	55	Carbon brush 7x17	2
25	Metal collar	2	56	Aluminum bush	1
26	Circlip	1	56-1	Insulation spacer	1
27	Metal collar	1			
28	Metal	1			
29	Final gear (L)	1			
30	Circlip	1			
31	Shift ring	1			
32	Metal collar	2			